

# TELFORD 25

**DP3 Pipelay  
Offshore Construction  
SURF  
Accommodation & Hook Up**



# TELFORD 25



Built according to a distinctive hybrid design philosophy, the multipurpose Telford 25 DP3 vessel includes a large unobstructed deck, an 800mt capacity crane with active heave compensated (AHC) features, a heave compensated gangway and the option of installing a modular rigid/flexible pipelay system.

## SPECIFICATIONS

### General

- **Classification** ABS ✕ A1 Barge (E), ✕ PAS, ✕ DPS-3, CRC
- **Flag** Gibraltar
- **Call Sign** ZDIS3
- **IMO Number** 8770106
- **Delivery** February 2009

### Principal Dimensions

- **Length Overall** 118.80m
- **Breadth** 30.40m
- **Extreme Breadth** 36.40m
- **Depth Main Deck** 8.40m
- **Operating Draft** 5.00m
- **Maximum Draft** 8.94m (Retractable thruster deployed)
- **Gross Tonnage** 14 829t
- **Net Tonnage** 4 638t

### Cranage

- **Mast Crane** (*Huisman-Itrec*)
  - **Main Hoist**  
800mt @30m over the stern  
800mt @26m revolving
  - **Whip Hoist** (man-riding)  
120mt @33.50m 3 falls  
100mt @39.00m 2 falls (AHC)  
50mt @72.00m 1 fall (AHC)
- **Pedestal Crane** (*TTS Marine*)
  - **Main Hoist**  
34mt @20m  
22mt @30m
  - **Aux. Hoist** (man-riding)  
5mt @31m

### Clear Deck Area

- **Approx. 1500m<sup>2</sup>**

### Deck Load

- 10t/m<sup>2</sup>

### Capacities

- **Fuel Oil** (storage) 1890.6m<sup>3</sup>
- **Fuel Day** (day tanks) 139.4m<sup>3</sup>
- **Fuel Oil Overflow** 24.2m<sup>3</sup>
- **Fuel Oil Purification** 81.4m<sup>3</sup>
- **Lube Oil** (Storage) 48.4m<sup>3</sup>
- **Fresh Water** 2612.3m<sup>3</sup>
- **Ballast Water** 6986.1m<sup>3</sup>
- **Sludge Oil** 113m<sup>3</sup>
- **Dirty Oil** 81m<sup>3</sup>
- **Black/Grey Water** 513.8m<sup>3</sup>
- **Bilge Water** 169.4m<sup>3</sup>

### Service Air

- **Service Air Compressors** (*Deno*)  
2x24m<sup>3</sup>/min FAD@6 bar

### DP System

- **Kongsberg K-POS 22**  
Aft Working Bridge
- **Kongsberg K-POS 12**  
Fore Navigation Bridge

### DP Reference System

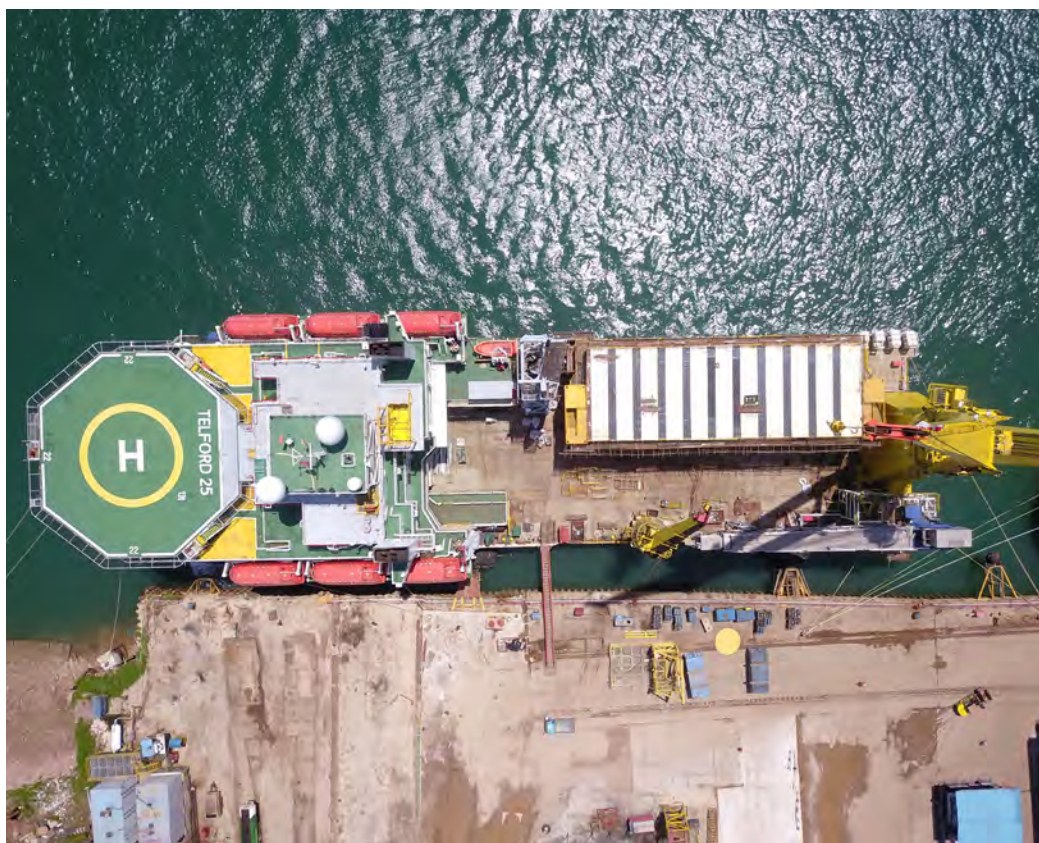
- **2 x Radius 1000**  
(independent operated)
- **2 x DGPS Receivers**
- **3 x Gyro Compass**
- **3 x Motion Reference Units**
- **1 x Lightweight Tautwire**
- **1 x HIPAP 500**
- **1 x Gangway** (if connected)
- **1 x Cyscan + Prisms Clusters**
- **3 x Wind Sensors**

### Power Plant

- **Main Generators** (*Caterpillar*)  
4 x Diesel Engines type CAT 3516 B  
(1825 kW)

### Propulsion

- **Bow Thruster** (*Rolls Royce*)  
1 x electrically driven 1355kW
- **Stern Thruster** (*Rolls Royce*)  
2 x FPP azimuth, 1920kW each direct driven diesel
- **Fore/Aft Thruster** (*Rolls Royce*)  
4 x FPP retractable azimuth,  
1920kW each direct driven diesel





## Endurance

- **Fresh Water** 2x50t/24hrs  
1x200t/24hrs
- **Fuel Oil (typical)**
  - Harbor 5m<sup>3</sup>/24hrs
  - Transit 20m<sup>3</sup>/24hrs  
(2x aft thrusters only)
  - DP 15m<sup>3</sup>/24hrs

## Helideck

- ABS, CAP437 7 Edition compliant suitable for Sikorsky S-92A Helibus
- Max. "D" 22.20m
- Max. T.O.W. 13t
- Helideck Monitoring System 100
- Fixed Foam System (3 monitors)
- Heli-Refueling System (*SyPack*)

## Accommodation

- Fully air-conditioned permanent accommodation for up to 355 persons in cabins all with individual bathroom facilities. Including conference room, offices, cinema, gymnasium, recreation rooms, laundry, internet café as well as a hospital.
- **355 berths in 105 cabins**
  - 5x1 person cabins
  - 25x2 persons cabins
  - 75x4 persons cabins

## Radio/Communication

- V-Sat Antenna (*Intellian V150NX*)
- GMDSS Areas 1,2 & 3
- EPIRB

- SART
- Integrated Telephone System
- Sound Powered Telephone
- Public Address System

## Lifesaving Appliances

- Liferafts 30x25 persons
- Lifeboats 4x106 persons  
2x102 persons
- Fast Rescue Boat 1x6 persons

## Gangway

- Electric-Hydraulic Telescopic Personnel Transfer Gangway (*Marine Aluminium*)  
Operational length 36.50m

## Pipelay Equipment (optional)

- Pipelay System (*SAS*)  
Starboard mounted single joint S-lay system, under dismantable Firing Line shelter
- Capacity  
4" - 48" diameter pipe  
(with coating 60")
- Tensioners  
2x60t Horizontal Tensioner
- A&R system  
120t A&R Winch  
120t Measuring Sheave

## Mooring System

- Anchor Windlass (*DMT*)  
2xElectrical Anchor Windlasses with wrapping heads
- Capstan (*DMT*)  
4x10t

## Additional Data

- Sewage Treatment Unit (*EVAC*)  
Vacuum system, with nil overboard discharge
- Incinerator (*TeamTec*)  
1x800,000kcal/h
- Yokohama Fenders  
2x 6.50x3.30m



# LOCATIONS - OPERATIONS



Our locations around the world mean we're always close to our customers.  
We serve all operators, from majors, internationals and NOCs to small independents and contractors —  
so let's keep in touch.

## Latin America

### Mexico

Calle 35 D, Suite 10  
Col Malibrán, 24197  
Ciudad del Carmen, Campeche  
Mexico  
Tel: +52 (1) 5564 151 719 (Mexico)  
+54 (9) 11 2790 2463 (Argentina)

## Europe

### The Netherlands

Maxwellstraat 2  
3316 GP Dordrecht  
The Netherlands  
Tel: +31 78 6526 930

## West Africa

### Angola

Condominio Mares do Sul  
Casa no. A07  
Talatona - Benfica  
Luanda  
Angola  
Tel: +244 923 522175

### Ghana

F181/5 Josiah Tongorara Street  
PMB CT 68 Cantonments  
Accra, Ghana  
Tel: +233 203 654 079  
+233 544 312 460

## Middle East

### UAE, Dubai – Headquarters

Telford Offshore Ltd  
Floor 31, Reef Tower  
P.O. Box 5003365  
Jumeirah Lakes Towers  
Dubai, United Arab Emirates  
Tel: +971 4 350 7600

## Asia-Pacific

### Australia

Level 24, 77 St Georges Terrace  
Perth WA 6000  
Australia  
Tel: +61 4 2417 0254

[contact@telfordoffshore.com](mailto:contact@telfordoffshore.com)